



BISMARCK
STATE COLLEGE

Art History II (ART 211)

Bismarck State College Library Pathfinder

<http://www.bismarckstate.edu/library/>



ODIN: Online Dakota Information Network

<http://odinlibrary.org/nbj.html>

The following resources were located by searching ODIN. ODIN is Bismarck State College's online library catalog. You can use it to search for books, videos, compact discs, and other library materials.

You can also search periodicals (magazines, journals, newspapers) by clicking on Databases (Articles & More) from the library homepage (<http://www.bismarckstate.edu/library/>).

Selected Reference Resources

Specialized encyclopedias, dictionaries, and handbooks are found in the reference section of the library and can be very helpful in your research.

- | | |
|---|------------------------|
| • Britannica Encyclopedia of American Art | Reference N6505 .B73 |
| • Longman Dictionary of Art | Reference N33 .M28 |
| • Encyclopedia of the Arts | Reference N31 .R8 |
| • Encyclopedia of World Art | Reference N31. E4833 |
| • Illustrated Dictionary of Art Terms | Reference N33 .R49 |
| • A Dictionary of Twentieth-Century Art | Reference N6490 .C5317 |
| • The Penguin Concise Dictionary of Art History | Reference N5300 .F64 |



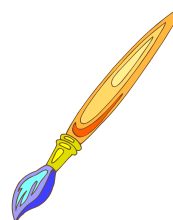
Need a Book, Article or Video?

Suggested Search Terms:

Note: Try a variety of subjects, such as: art, technology, medicine, music, literature, religion, warfare, mathematics, education, trade, commerce, language, astronomy, folklore, agriculture.

Try combining terms with AND: Architecture **AND** New York; Costume **AND** Jewelry

- | | | |
|----------------------|-------------------|---------------------------|
| • Adornment | • Décollage | • Icons |
| • Frank Lloyd Wright | • Expressionism | • Jewelry |
| • Architecture | • France | • Junk Sculpture |
| • Art Deco | • Gold | • Kinetic Sculpture |
| • Costume | • Gustave Courbet | • Kitsch |
| • New York | • Realism | • William Michael Harnett |
| • Ornamentation | • Sculpture | |
| • Painting | • Silver | |
| • Photomontage | • Surrealism | |
| • Post Modernism | • Trompe l'oeil | |
| • Post War Modern | • William Blake | |



Videos for this class are placed on reserve; ask for them at the circulation desk.

Accessing Databases (Articles & More)

- 1) Web Address: <http://www.bismarckstate.edu/library/Databases.asp>
- 2) Choose an appropriate database from the alphabetical list

You can search periodicals (magazines, journals, newspapers) by clicking on Databases (Articles & More) from the library homepage.

- 1) Go to: <http://www.bismarckstate.edu/library/>
- 2) Select: **Databases (Articles & More)**. *Second one down in your left hand column*
- 3) Select the database that is appropriate for your search
 - **Note: If you are not on campus, you will be required to log in**

To access these resources from off-campus, you will be prompted to log in. To do so, enter your **library card number** (barcode number on your card) and your **password** (your last name, in lowercase letters).

Example: 23103000287468 doe

Selected Internet Sites:

Art Cyclopedia

<http://www.artcyclopedia.com/>

A fine art search engine.

Art History

<http://witcombe.sbc.edu/ARTHLinks.html>

Art History Resources on the Web by Chris Witcombe.

World Wide Resource Corporation

www.wwar.com

Discover the “largest collection of fine art information: artists, museums, galleries, fine art, art history, art education, antiques, dance, theater, and more.”

The Metropolitan Museum of Art: Timeline of Art History

<http://www.metmuseum.org/toah/>

“The Timeline of Art History is a chronological, geographical, and thematic exploration of the history of art from around the world, as illustrated especially by the Metropolitan Museum of Art's collection.”



Citing Sources:

If you are using the research databases they provide citation help for all articles retrieved in most common citation formats. These should be considered a suggestion or help, not a finished product. Always check your form with a current citation handbook. There are numerous style guides that will help you cite sources and prepare a bibliography. Ask your instructor to tell you which style you should use for their class. You can find these style manuals in the Library:

- | | |
|--|--------------------------|
| • The Chicago Manual of Style | Reference: Z253 .U69 |
| • MLA Handbook for Writers of Research Papers | Reference: LB2369 .G53 |
| • MLA Style Manual and Guide to Scholarly Publishing | Reference: PN 2369 .G444 |
| • Publication Manual of the American Psychological Association | Reference: BF76.7 .P83 |