

BSC's Placement Report

The placement office at Bismarck State College was established in 1996 and has progressed to become the Counseling and Career Services office. This office assists students with the career counseling process and job search activities among employers, students and college staff. The office also provides students and faculty members with national labor market information, Job Seekers Network referral statistics for the college, and other relevant information in relation to past graduates. The Bismarck State College Placement Report reflects employment data related to BSC programs. This information may be useful in providing prospective students with information as they begin researching possible career paths.

Due to cyclical nature of business and industry, the information in this report should not be viewed as long term results, but rather as an informational resource for career planning. Local and regional economics may impact different outcomes in this report from year to year.

The data for this report was collected through E-mail surveys, phone contacts, and through information provided by program instructors. Throughout this process, phone contacts were made to obtain information from students who had not responded to the surveys. Individual instructors provided information on students who had not yet responded to the surveys or were unable to be contacted by phone.

This report contains information concerning graduates of the respective programs in which they were enrolled. Students are identified for follow-up by the Registrar's Graduate Report, which ran from July 1, 2005 to June 30, 2006. A graduate is defined as a student who has completed the required coursework for an Associate in Applied Science Degree, a Certificate, or Diploma program. These students must apply for graduation to be identified in the Registrar's Graduate Report.

Job Seekers Network is an online system used by the Counseling and Career Services office to post employment opportunities. This system can be accessed through the Career Services home page: www.bismarckstate.edu/student/career.

This office also provides personal counseling. This service is available for current BSC students.



Jay Meier

Bismarck State College

Director of Counseling and Career Services

Transfer Curricula

Accounting	Liberal Arts
Agriculture	Management
Art: Visual	Mathematics
Biology	Music
Business Administration	Nursing
Business Education	Optometry
Chemistry	Pharmacy
Chiropractic	Physical Education
Clinical Laboratory Science	Political Science
Computer Science	Pre-Medical
Criminal Justice	Psychology
Dentistry	Public Administration
Education	Radiologic Technology
Elementary Education	Respiratory Therapy
Engineering	Social Sciences
English	Social Work
Foreign Language	Sociology
Health Education	Speech Communication
History	Theatre Arts
Journalism	

Technical Programs

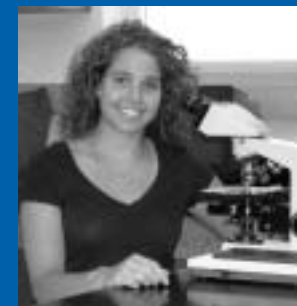
Agribusiness	Hospitality Management
Farm & Ranch Management	Human Services
Sales & Service	Information Processing Spec.
*Automotive Collision Technology	*Lineworker (Electrical)
*Automotive Technology	Management
Business and Office Technology	Entrepreneurship option
Administrative Assistant/General	Mass Communication
Administrative Assistant/Legal	*Mechanical Maintenance
Administrative Assistant/Medical	Technology
*Carpentry (Residential)	Nuclear Power Technology
*Clinical Laboratory Technician	*Nursing
*Commercial Art	*Certified Nursing Assistant
Computer Support Specialist	*Practical Nursing
Criminal Justice	*Associate Degree Nursing
Electric Power Technology	*Paramedic (EMT) Technology
Electrical Transmission Systems	*Phlebotomy Technician
Technology	*Power Plant Technology
*Electronics/Telecommunications	*Process Plant Technology
Technology	*Surgical Technology
Engineering Technician	Transportation & Supply Chain
Geographic Information Systems	Management
Technician	Web Page Development &
*Heating, Ventilation & Air	Design
Conditioning	*Welding

**Indicates limited enrollment programs*

2005-2006

Bismarck State College

PLACEMENT REPORT



Bismarck State College
1500 Edwards Avenue
P.O. Box 5587
Bismarck, ND 58506-5587
www.bismarckstate.edu

Bismarck State College 2005-2006 Counseling & Career Services Report

Program	Total Graduates	Number of Responses	Continuing Education	EMPLOYMENT				Offered Related Position, But Declined	**Salary Range	% Employed / Continuing Education/ Declined Offer
				*Related	*Unrelated	Unemployed				
Administrative Assistant, General	10	7	1	4	1	0	1	\$8.65-13.80	100%	
Administrative Assistant, Medical	7	7	2	2	2	0	1	\$6.50-11.42	100%	
Agribusiness Farm and Ranch Management	7	6	1	5	0	0	0	\$6-12.01	100%	
Agribusiness Sales and Service	5	5	0	3	2	0	0	\$7.21-12.50	100%	
Automotive Collision Technology	12	12	0	8	4	0	0	\$12-13.50	100%	
Automotive Technology	12	9	0	7	2	0	0	\$7.50-20.00	100%	
Business Management	17	13	3	9	0	1	0	\$7.25-27.40	92%	
Carpentry (Residential)	17	14	0	11	3	0	0	\$10-12	100%	
Clinical Laboratory Technician	4	4	0	3	0	1	0	NA	75%	
Commercial Art	16	15	0	11	2	1	1	\$8-9	93%	
Computer Support Specialist	21	17	6	9	2	0	0	\$8.50-16.84	100%	
Criminal Justice	3	3	0	3	0	0	0	\$11.53-13.46	100%	
Electric Power Technology	39	31	1	26	4	0	0	\$22	100%	
Electrical Transmission Systems Technology	4	2	0	1	1	0	0	NA	100%	
Electronics/Telecommunications Technology	19	17	1	11	4	0	1	\$12.75-18.00	100%	
Engineering Technician	3	3	0	3	0	0	0	\$13.75-17.76	100%	
Hospitality Management	5	2	0	2	0	0	0	NA	100%	
Human Services	9	7	1	3	2	1	0	\$16.25	86%	
Heating, Ventilation & Air Conditioning	19	17	3	10	3	0	1	\$8-15	100%	
Information Processing Specialist	9	8	1	6	0	1	0	\$10.09-14.42	88%	
Lineworker (Electrical)	37	30	0	25	4	1	0	\$11-23	97%	
Paramedic (EMT) Technology	27	19	1	17	1	0	0	\$11.25-17.30	100%	
Phlebotomy Technician	5	4	0	4	0	0	0	\$9.15-11.41	100%	
Power Plant Technology	66	56	5	41	9	1	0	\$13.43-35.00	98%	
Practical Nursing	13	11	0	9	0	2	0	\$12.42-19.35	82%	
Process Plant Technology	39	32	2	21	9	0	0	\$12.41-19.75	100%	
Surgical Technology	15	15	1	12	2	0	0	\$9.61-14.04	100%	
Welding Technology	15	13	2	11	0	0	0	\$14.01-28.80	100%	

*Information based on survey respondents, phone calls or information from instructors

**Salary based only on individuals who reported salary and accepted related employment